

## SPOT WALL Opal Lens - SILVER

GENUIT spots are luminaires made with the quality standards of products for industrial use. The shockproof tempered glass diffusers and the surface treatment guarantee great resistance of the product. GENUIT lamps are recommended for all applications where a long-lasting light source is required.

### TECHNICAL SPECIFICATIONS

Standard	Direttiva 2014/35/UE EN 60598-1 EN 60598-2-1 Direttiva 2011/65/UE EN 50581
Material (body)	Aluminum alloy
Material (lens)	Extra-clear silkscreened and tempered glass
Treatment	Die-cast aluminum (protective treatment on request)
Protection grade IP	(IP according - EN 60598-1) IP66
Impact resistance	(IK grade according IEC/EN 62262) IK10
Isolation class	I
Entry fitting	M20
Bulb fitting	GX53   LED Module
Power supply	from 0mA to 700mA
Type of driver (recommended)	in CC 6W - 700mA
Storage temperature	-50°C - +80°C
Operating temperature	-40°C - +70°C

Driver and bulb not included.



#### L90OPL-Silver

Dimensions (mm)  
113x126x57  
LED ø46



#### L90OML-Silver

Dimensions (mm)  
140x157x67  
LED ø70 - GX53



#### L90OGLSilver

Dimensions (mm)  
176x194x76  
LED ø70 - GX53

## SPOT WALL Fresnel Lens - SILVER

GENUIT spots are luminaires made with the quality standards of products for industrial use. The shockproof tempered glass diffusers and the surface treatment guarantee great resistance of the product. GENUIT lamps are recommended for all applications where a long-lasting light source is required.

### TECHNICAL SPECIFICATIONS

Standard	Direttiva 2014/35/UE EN 60598-1 EN 60598-2-1 Direttiva 2011/65/UE EN 50581
Material (body)	Aluminum alloy
Material (lens)	Fresnel in borosilicate glass
Treatment	Die-cast aluminum (protective treatment on request)
Protection grade IP	(IP according - EN 60598-1) IP66
Impact resistance	(IK grade according IEC/EN 62262) IK10
Isolation class	I
Entry fitting	M20
Bulb fitting	GX53   LED Module
Power supply	from 0mA to 700mA
Type of driver (recommended)	in CC 6W - 700mA
Storage temperature	-50°C - +80°C
Operating temperature	-40°C - +70°C

Driver and bulb not included.



#### L90FPL-Silver

Dimensions (mm)  
113x126x57  
LED ø46



#### L90FML-Silver

Dimensions (mm)  
140x157x67  
LED ø70 - GX53



#### L90FGL-Silver

Dimensions (mm)  
176x194x76  
LED ø70 - GX53

## LED MODULE Ø46

Constant voltage LED module, with PWM current input or DC current input.

Max power 9W

Luminous flux max 1279 lm.

There are 20 LEDs Liteon AZL for minimum CRI 80.

Internal module configuration: N. 4 parallel from N. 5 LEDs in series.



### TECHNICAL SPECIFICATIONS

Standard	EN62031   EN62471
LED module	With PWM Current Input   Input to DC Current
Temperature	2700 K   3000 K
Lumen	1210 lm   1279 lm
Voltage	24V
Printed circuit material	IMS
Printed circuit board	UL
Protection grade	IP20
Dimmerable	With standard power supply with Dali, Triac technology, Push, 0-10V, 1-10V
Beam angle	120°
LED numbers	48
PCB	IMS 1.6 mm
LED Type	OSRAM*2835
RA/CRI	Standard CRI>80,
Sep MacAdam (SDCM)	3
R9	CRI 80 ≥ 0
Factor of Safety (FoS)	1
Lumen maintenance factor	L70-B50>70.000h @tc=90°C/TM21
Maximum operating voltage of insulation	60V

### RICL4627

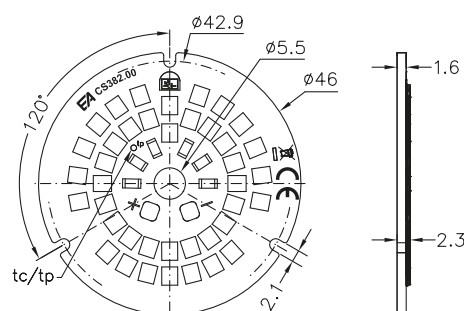
Dimensions (mm)

Ø 46 - 1.6 x 2.5

### RICL4630

Dimensions (mm)

Ø 46 - 1.6 x 2.5

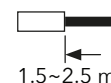


### Cablaggio / Wiring

Conduttore rigido - Solid conductor

Conduttore flessibile - Flexible conductor

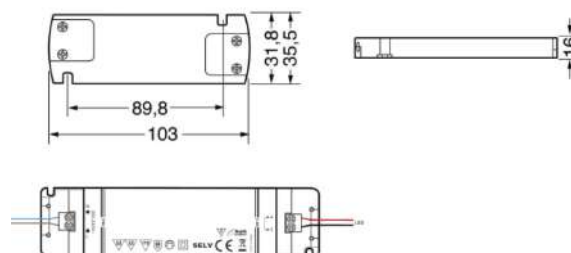
0.25~0.75mm<sup>2</sup> / AWG24~AWG18



### AVAILABLE DRIVERS

#### AM6

Driver Mini 6W - 500 Ma



\*Module RICL4627 or RICL4630, RICL7027 or RICL7030, integrated depending on the model chosen.

\*Illustrative images only.

Please note that Genuit does not assume responsibility in the event that the lamps and/or drivers supplied are not the same as the above



Tensione costante  
Constant voltage



Angolo del fascio luminoso  
Beam angle



Dimmerabile  
Dimmable



## LED MODULE Ø70

Constant voltage LED sheet, 24vdc

Max power 17W

Luminous flux max 2379 lm.

Designed for micro push connectors for quick connection of cables. Not self dissipate.



### TECHNICAL SPECIFICATIONS

Standard	EN62031   EN62471 IEC TR62778
LED module	With PWM Current Input   Input to DC Current
Temperature	2700 K   3000 K
Lumen	2312 lm   2379 lm
Voltage	24V
Printed circuit material	IMS
Printed circuit board	UL
Protection grade	IP20
Dimmerable	With standard power supply with Dali, Triac technology, Push, 0-10V, 1-10V
Beam angle	120°
LED numbers	48
PCB	IMS 1.6 mm
LED Type	OSRAM*2835
RA/CRI	Standard CRI>80
Sep MacAdam (SDCM)	3
R9	CRI 80 ≥ 0
Factor of Safety (FoS)	1
Lumen maintenance factor	L70-B50>85.000h @tc=90°C/TM21
Maximum operating voltage of insulation	60V

\*Module RICL10030, RICL7027 or RICL7030, integrated depending on the model chosen.

### RICL7027

2700K

Dimensions (mm)

Ø 70 - H 2.5 mm

(H 5 with micro push)

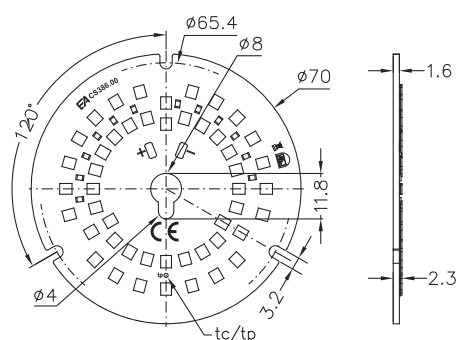
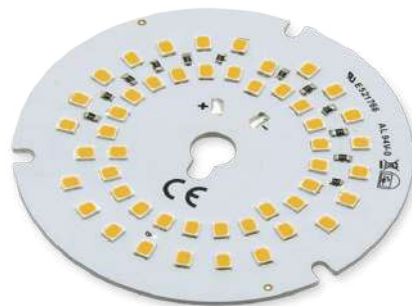
### RICL7030

3000K

Dimensions (mm)

Ø 70 - H 2.5 mm

(H 5 with micro push)



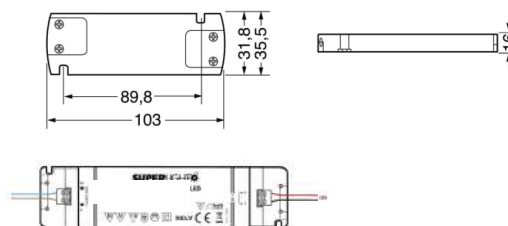
### AVAILABLE DRIVERS

#### AL20

LED 24V - 20W

#### AL30

LED 24V - 30W



\*Illustrative images only.

Please note that Genuit does not assume responsibility in the event that the lamps and/or drivers supplied are not the same as the above figures.

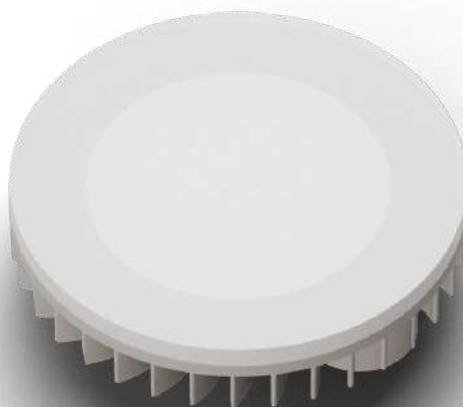
## Compatible lamp - GX53

BY M AND L MODELS

LED bulb GX53 Silamp 4W or 9 W super thin and flat is an excellent alternative to led. The opaque cover provides a homogeneous light that does not bother the eyes, and the replacement is very quick and simple: it does not require changes to the system and goes directly to the current of the house 220V.

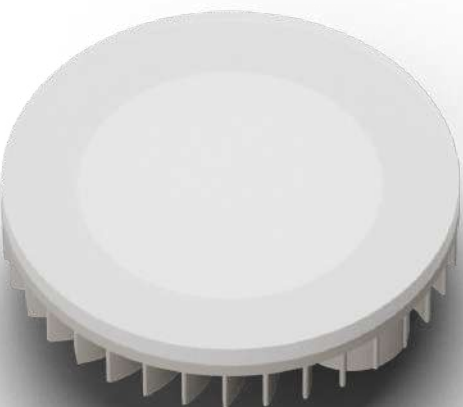
### RICG4

4W



### RICG9

9W



### TECHNICAL SPECIFICATIONS

Standard	EN62031 EN62471
LED module	With PWM Current Input   Input to DC Current
Temperature	2700 K   3000 K
Lumen	1825 lm   1920 lm
Wattage	4W or 9W
Input to DC current	from 0 mA to 700 mA
Protection grade	IP20

*\*Lamp not included*