

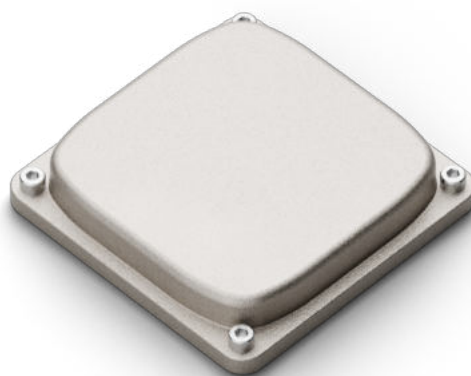
WALLPLATE Square Cap S SILVER

WALLPLATE plates are a range of high thickness aluminium alloy containers, with the quality standards of industrial products.

The product is complete with adapter for two-module recessed boxes, sealing gaskets and the natural surface finish gives an aesthetic value typical of industrial components.

TECHNICAL SPECIFICATIONS

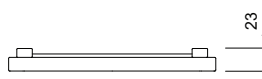
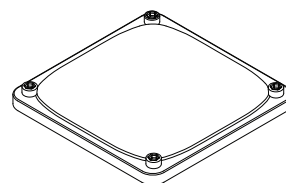
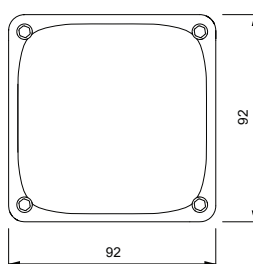
Standard	IEC/EN 602208 IEC/EN 60670-1
Material	Aluminum alloy
Treatment	Die-cast aluminum (protective treatment on request)
Protection grade IP	IP20 - IP35
Impact resistance	IK10
Isolation class	I
Storage temperature	-50°C - +90°C
Operating temperature	-40°C - +90°C



CQ95-Silver

Dimensions (mm)
92x92x25

Modules not included



WALLPLATE Square Cap M SILVER

WALLPLATE plates are a range of high thickness aluminium alloy containers, with the quality standards of industrial products.

The product is complete with adapter for two-module recessed boxes, sealing gaskets and the natural surface finish gives an aesthetic value typical of industrial components.

TECHNICAL SPECIFICATIONS

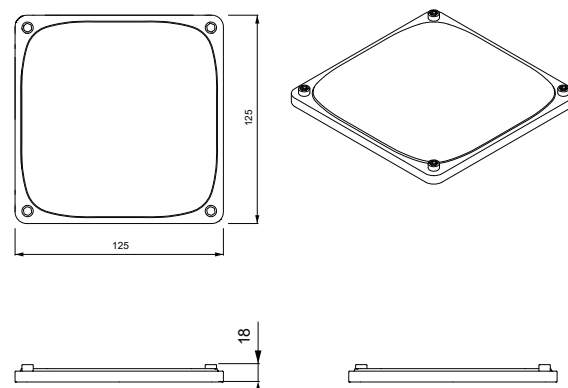
Standard	IEC/EN 602208 IEC/EN 60670-1
Material	Aluminum alloy
Treatment	Die-cast aluminum (protective treatment on request)
Protection grade IP	IP20 - IP35
Impact resistance	IK10
Isolation class	I
Storage temperature	-50°C - +90°C
Operating temperature	-40°C - +90°C



CQ125-Silver

Dimensions (mm)
125x125x18

Modules not included



WALLPLATE Square Cap L SILVER

WALLPLATE plates are a range of high thickness aluminium alloy containers, with the quality standards of industrial products.

The product is complete with adapter for two-module recessed boxes, sealing gaskets and the natural surface finish gives an aesthetic value typical of industrial components.

TECHNICAL SPECIFICATIONS

Standard	IEC/EN 602208 IEC/EN 60670-1
Material	Aluminum alloy
Treatment	Die-cast aluminum (protective treatment on request)
Protection grade IP	IP20 - IP35
Impact resistance	IK10
Isolation class	I
Storage temperature	-50°C - +90°C
Operating temperature	-40°C - +90°C



CQ155-Silver

Dimensions (mm)
155x155x18

Modules not included

