

BRACKET and FLANGE COPPER

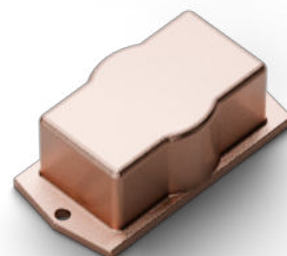
The Genuit connection and fastening systems are characterized by attention to detail and the quality of materials used. This ensures stylistic continuity with the other visible components of the system.

TECHNICAL SPECIFICATIONS

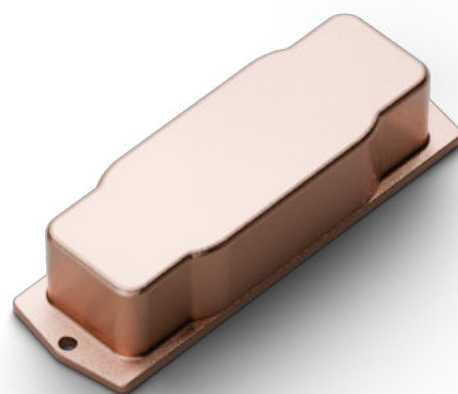
Material	Aluminum alloy
Treatment	High-thickness copper electroplating (protective treatment available upon request)
Electrical continuity	Through metal spring
Pipe inlet	Ø22 mm
Resistenza agli urti	IK10
Storage temperature	-50°C - +90°C
Operating temperature	-40°C - +90°C



Bracket
SF22 Copper
53x13x35 mm



Single Flange
FLS Copper
46x93x32 mm



Double Flange
FLD Copper
145x46x32 mm