

WALLBOX Square Junction Box 95 COPPER

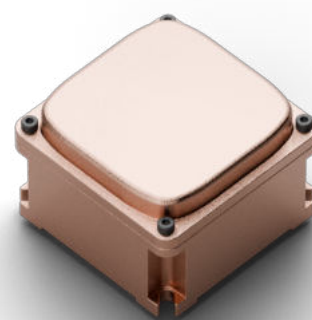
WALLBOX junction boxes are a range of products made of high-thickness aluminum alloy ensure IP40 degree of protection while with IP67 seal.

The system consists of different sizes worked with aesthetic surface treatments of different nature, which give the product typical finishes of industrial products.

TECHNICAL SPECIFICATIONS

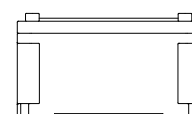
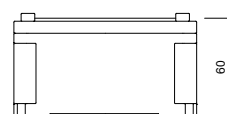
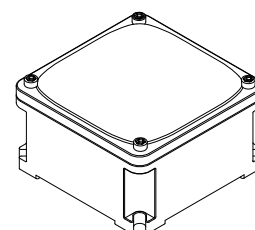
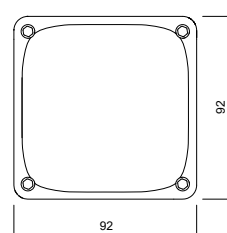
Standard	IEC/EN 602208 IEC/EN 60670-1
Material	Aluminum alloy
Treatment	High-thickness electrolytic copper deposition (protective treatment on request)
Protection grade IP	IP40 - IP67
Impact resistance	IK10
Isolation class	I
Storage temperature	-50°C - +90°C
Operating temperature	-40°C - +90°C

*To be drilled by metal milling machine.



DQ95-Copper

Dimensions (mm)
92x92x60



WALLBOX Square Junction Box 125 COPPER

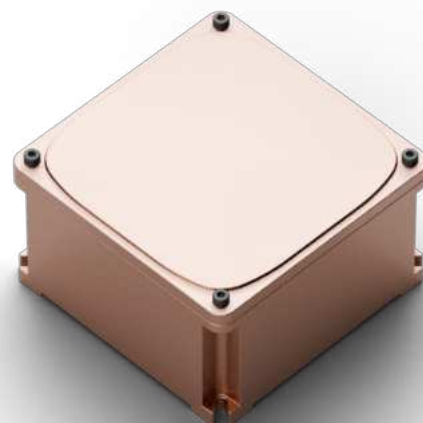
WALLBOX junction boxes are a range of products made of high-thickness aluminum alloy ensure IP40 degree of protection while with IP67 seal.

The system consists of different sizes worked with aesthetic surface treatments of different nature, which give the product typical finishes of industrial products.

TECHNICAL SPECIFICATIONS

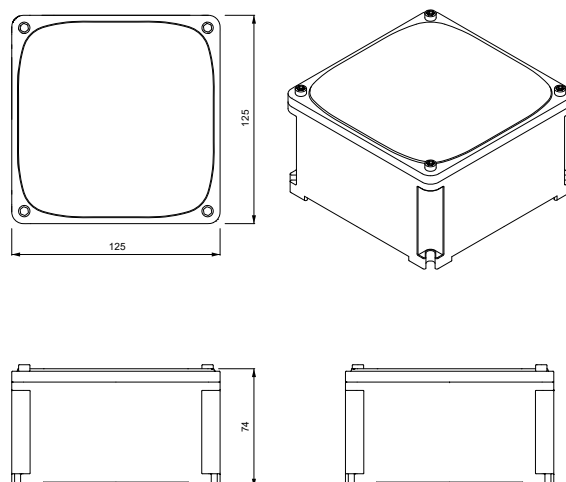
Standard	IEC/EN 602208 IEC/EN 60670-1
Material	Aluminum alloy
Treatment	High-thickness electrolytic copper deposition (protective treatment on request)
Protection grade IP	IP40 - IP67
Impact resistance	IK10
Isolation class	I
Storage temperature	-50°C - +90°C
Operating temperature	-40°C - +90°C

*To be drilled by metal milling machine.



DQ125-Copper

Dimensions (mm)
125x125x74



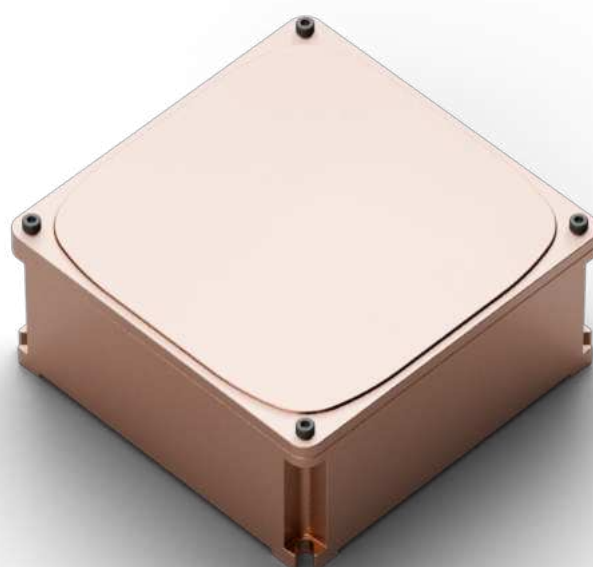
WALLBOX Square Junction Box 155 COPPER

WALLBOX junction boxes are a range of products made of high-thickness aluminum alloy ensure IP40 degree of protection while with IP67 seal.

The system consists of different sizes worked with aesthetic surface treatments of different nature, which give the product typical finishes of industrial products.

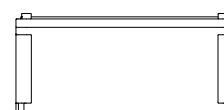
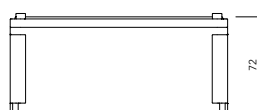
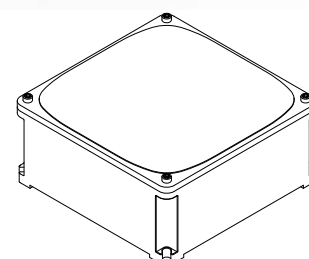
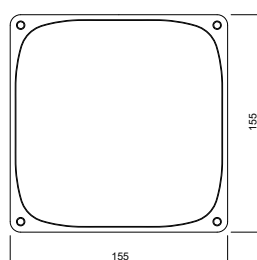
TECHNICAL SPECIFICATIONS

Standard	IEC/EN 602208 IEC/EN 60670-1
Material	Aluminum alloy
Treatment	High-thickness electrolytic copper deposition (protective treatment on request)
Protection grade IP	IP40 - IP67
Impact resistance	IK10
Isolation class	I
Storage temperature	-50°C - +90°C
Operating temperature	-40°C - +90°C



DQ155-Copper

Dimensions (mm)
155 x 155 x 72



*To be drilled by metal milling machine.