

## BRACKET and FLANGE CORTEN

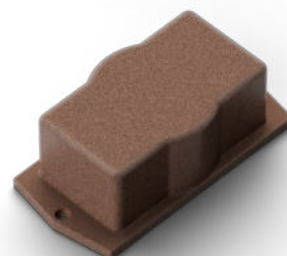
The Genuit connection and fastening systems are characterized by attention to detail and the quality of materials used. This ensures stylistic continuity with the other visible components of the system.

### TECHNICAL SPECIFICATIONS

Material	Aluminum alloy
Treatment	Powder coating (protective treatment available upon request)
Electrical continuity	Through metal spring
Pipe inlet	Ø22 mm
Resistenza agli urti	IK10
Storage temperature	-50°C - +90°C
Operating temperature	-40°C - +90°C



**Bracket**  
**SF22 Corten**  
*52x12x37 mm*



**Single Flange**  
**FLS Corten**  
*46x93x32 mm*



**Double Flange**  
**FLD Corten**  
*145x46x32 mm*